

Public Information Policy

The disclosure and sale of Assessor's information are governed under California Revenue and Taxation Code Section 408.3 and California Government Code 6250. Certain Assessor's records are deemed "confidential information" and are exempt from public disclosure. These include: Preliminary Change in Ownership Report (PCOR), Change in Ownership Statement (COS), Business Property Statement (BPS) and market sales information obtained from property owners.

Confidential information can be released only if:

- 1) Authorization is received from the owner of the property, OR
- 2) Requested by an official court order.

Property owners who wish to release their confidential property information to an outside party must sign a "**Taxpayer Authorization for Release of Information**" form.



Disclaimer

Information pertaining to property characteristics is maintained by the Assessor's Office solely for assessment purposes and is not continuously updated by the Assessor. Neither the County of Ventura nor the Assessor shall incur any liability for errors, omissions, or approximations with respect to the information provided at the request of any party.

Viewing Records at the Assessor's Office:

Information on property ownership, characteristics, assessed valuation, and Assessor's maps are available for public viewing at the Assessor's office.

Ventura County Assessor's Office is located at:

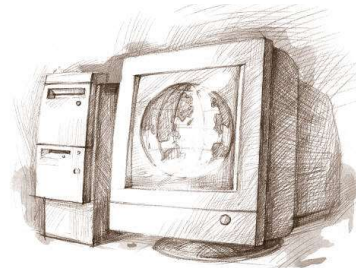
Government Center

Hall of Administration
County Assessor
800 South Victoria Ave.
Ventura, CA 93009-1270

Phone: (805) 654-2181

Fax: (805) 645-1305

Email: assessor.info@ventura.org



Public Inquiry terminals are available for use
FREE OF CHARGE
during regular business hours: 8-5 M-F



FREE SELF HELP WEBSITES

Detailed Property Information

<http://prop-tax.countyofventura.org>

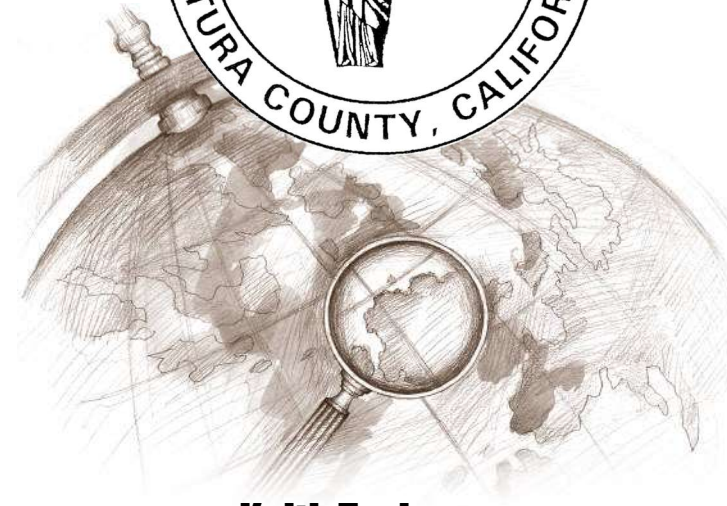
Assessor's Parcel Maps

<http://assessor.countyofventura.org>

VENTURA COUNTY Assessor's Office

Public Information Fee Schedule

Effective January 1, 2023



Keith Taylor

Ventura County Assessor

(805) 654-2181

<http://assessor.countyofventura.org>

Public Information Data
Available at the Front Counter

Photocopy Services	Price Per Page
Photocopies of Assessor's Parcel Maps 11"x17" or reduced electrostatic copy	\$.04 B/W \$0.12 Color
Photocopies of Annual Catalog of Changes to Assessor's Parcel Maps	\$.03 B/W \$0.10 Color
Photocopies of Name Index to Secured Roll	\$.03 B/W \$0.10 Color
Photocopies of Numeric Index to Secured Roll	\$.03 B/W \$0.10 Color
Unextended Roll - SECURED	\$.03 B/W \$0.10 Color
Unextended Roll - UNSECURED	\$.03 B/W \$0.10 Color
Public Inquiry Terminal Use	No charge
Public Information Database Screen Print or Specific Index Pages (see Product Index)	\$.03 B/W \$0.10 Color

Roll Data - Basic roll data includes non-confidential, basic ownership and property information. These include owner's name, mailing address, sales date and assessed value, square footage, bedroom and bath count, additions, year built and lot size. Basic roll data for **residential** homes are available for public viewing no charge. Such information may be provided to the owner of subject property via the phone or email, also at no charge. Basic roll data for multi-residential homes and commercial and industrial properties are not available on Public Inquiry Terminals and are available only by special request. A fee will be charged based on the service required to process each special request.

Photocopying public property records is not subject to taxes.

Public Information Data
Available by Request
 Call 805-654-2181

Product	Price
Extended Current Roll – Property Characteristics – Assessor's property records with extended characteristics are available. A signed written agreement is required prior to the release of data for individuals or businesses purchasing an entire Assessment Roll.	
Option I: Secured Roll (.TXT) – Includes 100+ data fields available electronically.	\$465 entire roll
Option II: Unsecured Roll (.TXT) – Includes 35+ data fields available electronically.	\$465 entire roll
Roll Being Prepared – Update Services Updates requested can be for entire County or can be made specific to a geographical area or Fund Number.	
(TXT file electronically) – Eleven monthly updates of the Assessor's Secured Roll are available for changes occurring July thru May.	\$700 per year
Special Requests – The Assessor's Office can provide a number of research and informational services for data not available on Public Terminals that require minimal searches/compilations from official documents held by the Assessor; e.g., Multi-Residential and Commercial and Industrial properties.	\$73 per hour Charges incurred at ¼ hour increments

Public Information Data
Available by Request
 Call 805-654-2181

Product	Price
Assessor Data Reports (multiple formats) – Special ad hoc reports (standard or non-standard) requiring customized programming and or querying of Assessor's database; or conversion of data from delimited text format.	\$465
Assessor Parcel Maps (PDF) – The Complete set of over 7,500 Assessor's Parcel Maps countywide is electronically.	\$465 entire county
Map Update Service (PDF) – Three quarterly updates of all changes made to Assessor's maps. The Assessor's update to the <u>Catalog of Changes</u> is also included.	\$700 per year
Name Index (PDF) – The Name index is a listing of owners' names, mailing addresses and TRAs of every parcel in Ventura County and is sorted alphabetically by owners' last names.	\$465
Sales History Transaction Report – A historical two-year period of sales reflecting indicated sale prices.	\$465
Sales History Quarterly Updates – Quarterly updates of the Sales History Transaction Report.	\$585
APN History file (.TXT) – A lineage trail of APNs that have split, subdivided or combined.	\$465 per data set