

## Public Information Policy

The disclosure and sale of Assessor's information are governed under California Revenue and Taxation Code Section 408.3 and California Government Code 6250. Certain Assessor's records are deemed "confidential information" and are exempt from public disclosure. These include: Preliminary Change in Ownership Report (PCOR), Change in Ownership Statement (COS), Business Property Statement (BPS) and market sales information obtained from property owners.

**Confidential information can be released only if:**

- 1) Authorization is received from the owner of the property, OR
- 2) Requested by an official court order.

Property owners who wish to release their confidential property information to an outside party must sign a "*Taxpayer Authorization for Release of Information*" form.



### Disclaimer

Information pertaining to property characteristics is maintained by the Assessor's Office solely for assessment purposes and is not continuously updated by the Assessor. Neither the County of Ventura nor the Assessor shall incur any liability for errors, omissions, or approximations with respect to the information provided at the request of any party.

### Viewing Records at the Assessor's Office:

Information on property ownership, characteristics, assessed valuation, and Assessor's maps are available for public viewing at the Assessor's office.

### Ventura County Assessor's Office is located at:

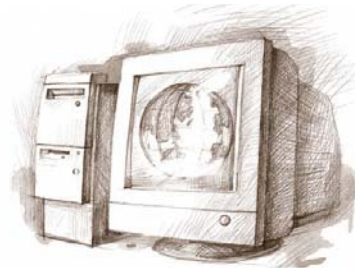
#### Government Center

Hall of Administration  
County Assessor  
800 South Victoria Ave.  
Ventura, CA 93009-1270

Phone: (805) 654-2181

Fax: (805) 645-1305

Email: [assessor.info@ventura.org](mailto:assessor.info@ventura.org)



Public Inquiry terminals are available for use  
**FREE OF CHARGE**  
during regular business hours: 8-5 M-F



### FREE SELF HELP WEBSITES

Detailed Property Information  
<http://prop-tax.countyofventura.org>

Assessor's Parcel Maps  
<http://assessor.countyofventura.org>

REVISED July, 2011

# VENTURA COUNTY

## Assessor's Office

# Public Information

## Fee Schedule

Effective July 1, 2011



**Dan Goodwin, MAI**  
Ventura County Assessor

**(805) 654-2181**

<http://assessor.countyofventura.org>

Public Information Data  
**Available at the Front Counter**

Photocopy Services	Price
<b>Photocopies of Assessor's Parcel Maps 11"x17" or reduced electrostatic copy</b>	<b>\$1.00*</b> per map page
<b>Photocopies of Annual Catalog of Changes to Assessor's Parcel Maps</b>	<b>\$1.00</b> per page <b>\$10.00</b> Catalog
<b>Photocopies of Name Index to Secured Roll</b>	<b>\$0.25*</b> per page
<b>Photocopies of Numeric Index to Secured</b>	<b>\$0.25*</b> per page
<b>Unextended Roll - SECURED</b>	<b>\$0.25*</b> per page
<b>Unextended Roll - UNSECURED</b>	<b>\$0.25*</b> per page
<b>Assessor Certification Service</b> (free for owner of subject property)	<b>\$2.00</b> per page
<b>Public Inquiry Terminal Use</b>	<b>No charge</b>
<b>Public Information Database Screen Print</b> or <b>Specific Index Pages</b> (see Product Index)	<b>\$3.00*</b> per screen page

**Roll Data** - Basic roll data includes non-confidential, basic ownership and property information. These include owner's name, mailing address, sales date and assessed value, square footage, bedroom and bath count, additions, year built and lot size. Basic roll data for **residential** homes are available for public viewing no charge. Such information may be provided to the owner of subject property via the phone or email, also at no charge. Basic roll data for multi-residential homes, and commercial and industrial properties are not available on Public Inquiry Terminals and are available only by special request. A fee will be charged based on the labor hours required to process each special request.

**\* first 10 maps/pages are free**

Public Information Data  
**Available by Request**  
 Call 805-654-2181

Product	Price**
<b>Mailing Labels</b> – hardcopy form. Limit 10,000 records per request.	<b>\$0.025</b> per record
Electronic labels	<b>\$50 minimum</b>
<b>Name Index</b> (PDF) – The Name index is a listing of owners' names, mailing addresses and Tax Rate Areas (TRAs) of every parcel in Ventura County and is sorted alphabetically by owners' last names.	<b>\$330</b>
<b>Numeric Index</b> (PDF) – The Numeric Index lists owners' names, parcel numbers, mailing addresses, TRAs and document dates of every parcel in Ventura County and is sorted by Assessor's parcel number.	<b>\$330</b>
<b>Situs Address Index</b> (PDF) – The Situs Address index is a listing of APN and TRA information of every parcel in Ventura County and is sorted by property street name.	<b>\$330</b>
<b>Site Use Code Table</b> – A code that designates the property's predominant use and is a factor in assessing taxable value.	<b>\$10</b>
<b>Extended Current Roll – Property Characteristics</b> – Assessor's property records with extended characteristics are available for \$0.03 per parcel. A signed written agreement is required prior to the release of data for individuals or businesses purchasing an entire Assessment Roll.	
<b>Option I: Secured Roll</b> (.TXT) – Includes 100+ data fields available on CD-ROM or FTP depending on request.	<b>\$7,706</b> entire roll
<b>Option II: Unsecured Roll</b> (.TXT) – Includes 35+ data fields available on CD-ROM or FTP depending on request.	<b>\$2,260</b> entire roll
<b>APN History file</b> (.TXT) – A lineage trail of APNs which have split, subdivided or combined.	<b>\$400</b> per data set

**\*\* Price does not include applicable state sales tax of 7.5% Payment must be received before data is released.**

Public Information Data  
**Available by Request**  
 Call 805-654-2181

Product	Price**
<b>Roll Being Prepared – Update Services</b> Updates requested can be for entire County or can be made specific to a geographical area or Fund Number.	
<b>Option I</b> (TXT file via FTP) – Eleven monthly updates of the Assessor's Secured Roll are available for changes occurring July thru May.	<b>\$2,200</b> per year
<b>Option II</b> (TXT via FTP) – A one-time request of changes occurring July thru May.	<b>\$0.03</b> per record <b>\$50 minimum</b>
<b>Sales History Transaction Report</b> – A historical two-year period of sales reflecting indicated sale prices.	<b>\$175</b>
<b>Sales History Quarterly Updates</b> – Quarterly updates of the Sales History Transaction Report.	<b>\$50/yr.</b>
<b>Assessor Parcel Maps</b> (TIFF) – The Complete set of over 7,500 Assessor's Parcel Maps county-wide is available on CD-ROM.	<b>\$50</b> entire county
<b>Map Update Service</b> (TIFF) – Three quarterly updates of all changes made to Assessor's maps. The Assessor's update to the <i>Catalog of Changes</i> is also included.	<b>\$200</b> per year
<b>Special Requests</b> – The Assessor's Office can provide a number of research and informational services for data not available on Public Terminals that require minimal searches/compilations from official documents held by the Assessor; e.g., Multi-Residential and Commercial and Industrial properties.	<b>\$40</b> per hour Charges incurred at ¼ hour increments
<b>Assessor Data Reports</b>	<b>\$50</b>
<b>Option I</b> (multiple formats) – Selected subsets of Assessor Records and analysis derived from standard Assessor Reports.	
<b>Option II</b> (multiple formats) – Non Standard reports requesting queries of the Assessor's database; or conversion of data from delimited text format.	<b>\$275</b>